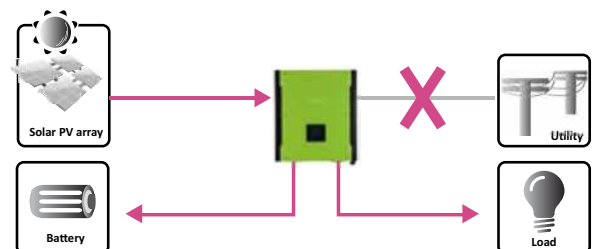
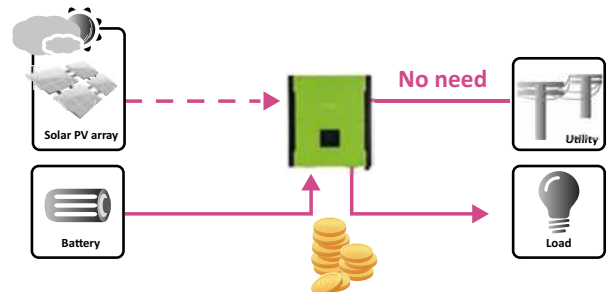
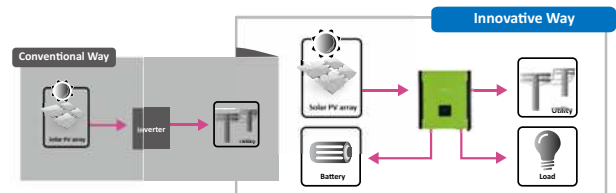


# 10KW TRIPHASE INVERTER TT-PLUS10K/MPPT

MODEL	TOMMA-10K MPPT
<b>PHASE</b>	3-phase in / 3-phase out
<b>MAXIMUM PV INPUT POWER</b>	14850 W
<b>RATED OUTPUT POWER</b>	10000 W
<b>MAXIMUM CHARGING POWER</b>	9600 W
<b>GRID-TIE OPERATION</b>	
<b>PV INPUT (DC)</b>	
Nominal DC Voltage / Maximum DC Voltage	720 VDC / 900 VDC
Start-up Voltage / Initial Feeding Voltage	320 VDC / 350 VDC
MPP Voltage Range	400 VDC ~ 800 VDC
Number of MPP Trackers / Maximum Input Current	2 / 2 x 18.6A
<b>GRID OUTPUT (AC)</b>	
Nominal Output Voltage	230 VAC (P-N) / 400 VAC (P-P)
Output Voltage Range	184 - 265 VAC* per phase
Nominal Output Current	14.5A per phase
Power Factor	> 0.99
<b>EFFICIENCY</b>	
Maximum Conversion Efficiency (DC/AC)	96%
European Efficiency@ Vnominal	95%
<b>OFF-GRID OPERATION</b>	
<b>AC INPUT</b>	
AC Start-up Voltage/Auto Restart Voltage	120 - 140 VAC per phase / 180 VAC per phase
Acceptable Input Voltage Range	170 - 280 VAC per phase
Maximum AC Input Current	40 A
<b>PV INPUT (DC)</b>	
Maximum DC Voltage	900 VDC
MPP Voltage Range	400 VDC ~ 800 VDC
Number of MPP Trackers/Maximum Input Current	2 / 2 x 18.6A
<b>BATTERY MODE OUTPUT (AC)</b>	
Nominal Output Voltage	230 VAC (P-N) / 400 VAC (P-P)
Output Waveform	Pure Sinewave
Efficiency (DC to AC)	91%
<b>HYBRID OPERATION</b>	
<b>PV INPUT (DC)</b>	
Nominal DC Voltage / Maximum DC Voltage	720 VDC / 900 VDC
Start-up Voltage / Initial Feeding Voltage	320 VDC / 350 VDC
MPP Voltage Range	400 VDC ~ 800 VDC
Number of MPP Trackers/Maximum Input Current	2 / 2 x 18.6A
<b>GRID OUTPUT (AC)</b>	
Nominal Output Voltage	230 VAC (P-N) / 400 VAC (P-P)
Output Voltage Range	184 - 264.5 VAC* per phase
Nominal Output Current	14.5 A per phase
<b>AC INPUT</b>	
AC Start-up Voltage / Auto Restart Voltage	120 - 140 VAC per phase / 180 VAC per phase
Acceptable Input Voltage Range	170 - 280 VAC per phase
Maximum AC Input Current	40 A
<b>BATTERY MODE OUTPUT (AC)</b>	
Nominal Output Voltage	230 VAC (P-N) / 400 VAC (P-P)
Efficiency (DC to AC)	91%
<b>BATTERY &amp; CHARGER</b>	
Nominal DC Voltage	48 VDC
Maximum Charging Current	Default 60A, 10A - 200A (Adjustable)
<b>GENERAL</b>	
<b>PHYSICAL</b>	
Dimension, D x W x H (mm)	167.5 x 500 x 622
Net Weight (kgs)	45
<b>INTERFACE</b>	
Communication Port	RS-232/USB
Intelligent Slot	Optional SNMP, Modbus and AS-400 cards available
<b>ENVIRONMENT</b>	
Humidity	0 ~ 90% RH (Non-Condensing)
Operating Temperature	-10 to 55°C
Altitude	0 ~ 1000 m**



\*These figures may vary depending on different AC voltage and country requirements.  
\*\*Power derating 1% every 100 m when altitude is over 1000m.  
Product specifications are subject to change without further notice.